



- ◆ Reduce takeoff time by 80% – bid more work . . . and get more work!
- ◆ Increase accuracy – quit losing money to errors and omissions and restore profits!
- ◆ Graphic audit trail verifies your estimate.



decDigital *Power Takeoff* user working with a digitizer

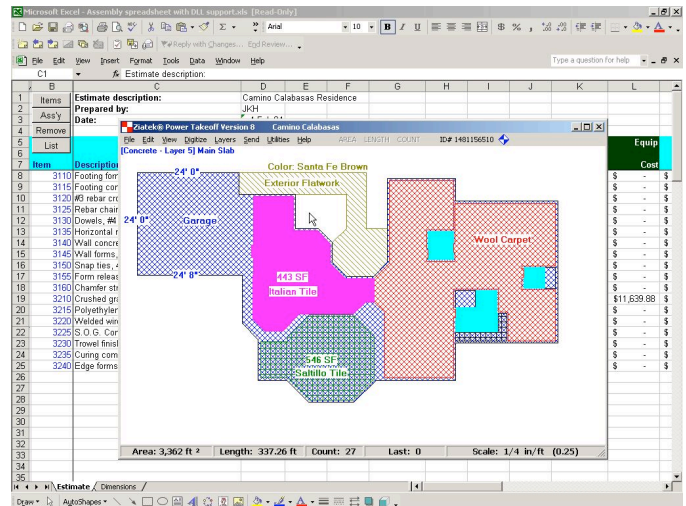
decDigital *Power Takeoff* is the leading tool for construction cost estimators who need fast, accurate quantities from paper or electronic drawings or laser-acquired field measurements. By combining ease-of-use with unmatched power and sophistication, this system delivers capabilities that no other program offers! decDigital *Power Takeoff* links quantities to any other *Windows*TM program with push-of-a-button simplicity, rendering it the most universal takeoff program in the world.

Standard Features

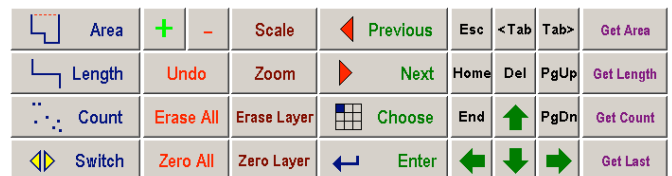
- ◆ Digitize complex areas, lengths, counts and volumes from blueprints in seconds.
- ◆ Use any scale – any of the popular metric and English units can be used. Use this feature to convert metric drawings to English measurements!
- ◆ Auto-scale unknown scales; automatically convert feet-inches-fractions to decimal equivalent.
- ◆ Up to 100 different scales can be used at one time within a single project! A detail that is drawn at a

different scale than the rest of the drawing is simply assigned its own scale on its own “layer”.

- ◆ Color-code any work breakdown structure of the takeoff. Select from the entire Window pallet of up to 16 million colors! Shading style, line style, and line weight can also be used for visual identification of different takeoff objects.
- ◆ Print takeoff screens in color – turning “layers” on or off to customize the graphic information to be printed.
- ◆ Send takeoff quantities **DIRECTLY to Excel, Lotus or other *Windows* programs** without cumbersome Cut/Copy/Paste operations, and without losing formulas or macros.



decDigital *PowerTakeoff* links to Excel or any other *Windows*TM application.

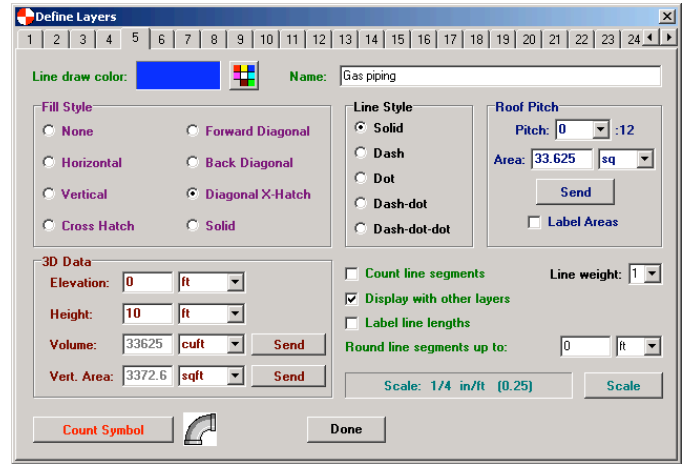


Menu pad is used with digitizer pen.

- ◆ Easy-to-use menu pad is active in decDigital *Power Takeoff* and in any estimating application! The menu pad offers features that allow the user

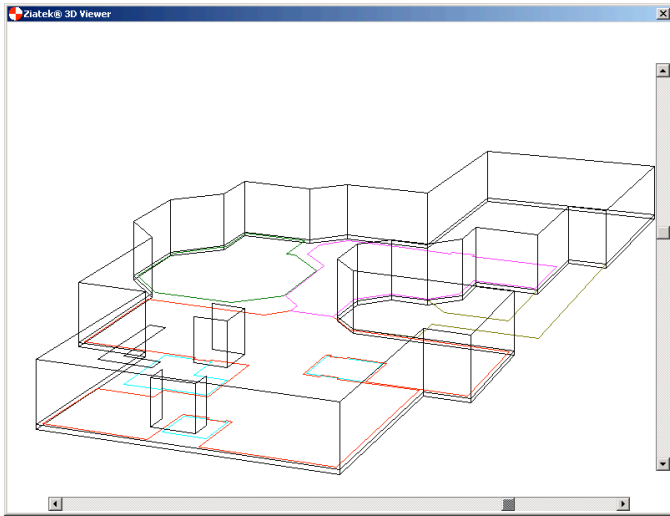
to navigate in other programs with the digitizer pen, reducing the need to switch to mouse and keyboard for program operation.

- ◆ Embedded calculator simplifies on-the-fly conversions. Load digitized quantities into the calculator with a single button click and transfer results into *any Windows* program.
- ◆ Quantities are organized into a grid for viewing, printing, or copying to a dedicated spreadsheet program.
- ◆ Generate 3D quantities and view 3D image from any angle.



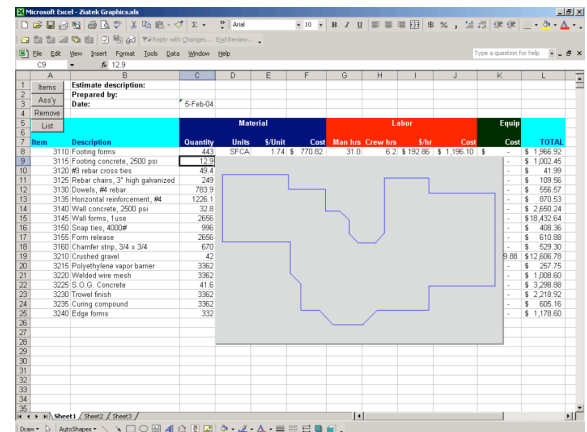
Layer definition screen

- ◆ Each of 100 layers can be assigned its own custom count symbol. Count symbols are conventional *Windows* *.bmp files. User can create an unlimited library of count symbols with the **decDigital Bitmap Editor**
- ◆ Powerful *dynamic link library* (Ziatek.dll) provides extended macros for highly automated data transfer with other programs. Macros are provided in sample *Excel™* spreadsheets.

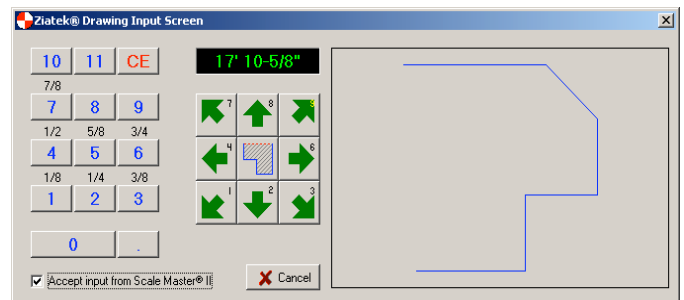


3D perspective image can be rotated to any viewing angle.

- ◆ Work Breakdown Structure is easily managed with “layers” and “group filters”.
- ◆ Graphic information can be exported to a DXF file for post processing in CAD programs.
- ◆ Annotate image with text – drag-and-drop text labels and revise text with ease.
- ◆ An *Object Editor* allows the user to inspect and modify the attributes of individual digitized objects. An example would be to move a room object from a layer defined for carpet to a layer defined for floor tile when a change in floor finish specifications is issued. A few mouse clicks eliminates the need to re-digitize the object!



When a value is transferred from **decDigital Power Takeoff**, a macro in this spreadsheet retrieves the graphic image associated with that quantity. That image can be displayed with a double-click on the quantity field, and hidden with a single-click. This feature is activated by simply enabling a hotkey transfer in **decDigital Power Takeoff!** The value of this graphic audit trail cannot be overstated!



Manual drawing screen

Summary

Simply put, **decDigital Power Takeoff** is the most complete and capable takeoff system available! Its ease of use defies its incredible power. Its superior technology allows for multiple sources of input and its universal compatibility allows its output to be linked to any *Windows* program . . . even non-*Windows* applications that are launched in the *Windows* environment!

The value of a well-implemented *graphic* audit trail cannot be understated. It can make the difference between success and failure in a construction claim involving orders of magnitude more money than the cost of this system! **decDigital**'s technology lets you add graphic, numeric and notational audit trail information to even a generic spreadsheet!

Price List (shipping not included)

Software

- decDigital Power Takeoff 2008 Standard** Software for Windows 95/98/NT/2000/XP/Vista..... \$995
- ◆ 100 layers
 - ◆ 2D & 3D takeoff and imaging
 - ◆ Includes **decDigital Bitmap Editor**
 - ◆ Included **decDigital CADapult** drawing program
 - ◆ **30-day money-back guarantee**
- decDigital Power Advantage Plan** (annual)..... \$300
- ◆ Toll-free telephone support
 - ◆ Free software upgrades
 - ◆ Includes sample spreadsheets with **decDigital** macros.
 - ◆ Discounts on additional products

Hardware

- GTCO 30x36 Roll-Up Digitizer w/stylus (35"x44" footprint)** \$2,225
Deluxe Carrying Case \$ 109
- GTCO 36x48 Roll-Up Digitizer w/stylus (41"x56" footprint)** \$2,625
Deluxe Carrying Case \$ 119
- GTCO 36x48 Tablet Digitizer w/stylus & Plan Holder (45"x60" footprint)** \$2,795
- GTCO Plan Hold Down for 36"x48" Tablet**..... \$ 159
- Chapparral Pedestal Base (raise/lower/tilt) for Tablet, included mounting brackets**..... \$979

Ask about our affordable leasing plans!

Ziatek, Inc.

4057 Milagro Oro
Santa Fe, NM 87507

Tel: (505) 471-0757

Fax: (505) 438-8658

e-mail: info@ziatek.com